

This document must be retained for future reference.

It is the responsibility of the person installing the electrical equipment to ensure that the installation meets the requirements of the IET wiring regulations and is therefore 'fit for purpose'. Factors such as correct selection of components, cable sizing, protective devices and Earth bonding are all critical and should be checked prior to full testing and power-up. Any other regulations applicable to the equipment being installed such as the Machinery Directive and current health and safety legislation must also be adhered to.

All connections (including factory made) must be checked for the correct tightness prior to commissioning of the electrical installation.  
All connections should also be inspected periodically to ensure correct tightness.

**DO NOT USE POWER TOOLS ON THESE PRODUCTS**



## SLTPN250-SPD12MKIT



### Kit Contents:

- 1 x Mersen 4 Module 83120139 Type 1/2 SPD
- 1 x 3 Pole 22 x 58mm Fuse Holder
- 3 x 125A 22 x 58mm gL Fuses
- 1 x 16mm<sup>2</sup> Cable set
- 1 x 125A 3 Pole Main Switch
- 2 x DIN Rail Mounted Blanks



Short cables must be fitted first before fitting onto the DIN rail.  
Brown wire: L1 SPD to L1 Fuse Holder.  
Black wire: L2 SPD to L2 Fuse Holder.  
Grey wire: L3 SPD to L3 Fuse Holder.

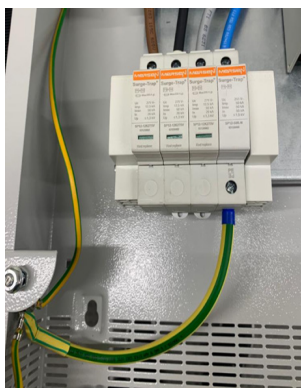
It is easier to fit these cables loosely before fitting the fuse holder and the SPD on to the DIN rail



Fit the Fuse carrier on the top Din-Rail next to the Incomer.  
Fit the SPD and Blanks either side of the SPD on the Din-Rail below.



Connect from the Neutral terminal of the SPD up to the Neutral Bar.  
Tighten the connections from the Fuse Carrier to the Top of the SPD.



Connect the earth cable to Earth Stud.



Connect the top of the Fuse Carriers to the Main switch using the cables provided.

Brown wire: L1 Fuse Carrier to L1 Main Switch

Black wire: L2 Fuse Carrier to L2 Main Switch

Grey wire: L3 Fuse Carrier to L3 Main Switch



Fit the 125A 22x58mm Fuses provided in the 3 pole Fuse Holder.

### Images of final Installation



| Devices                   | Torque Values |
|---------------------------|---------------|
| 125A Main Switch          | 2.5Nm         |
| SPD                       | 4.0Nm         |
| 125A Fuse Holder          | 4.0Nm         |
| Earth & Neutral Terminals | 2.0Nm         |