

This document must be retained for future reference.

It is the responsibility of the person installing the electrical equipment to ensure that the installation meets the requirements of the IET wiring regulations and is therefore 'fit for purpose'. Factors such as correct selection of components, cable sizing, protective devices and Earth bonding are all critical and should be checked prior to full testing and power-up. Any other regulations applicable to the equipment being installed such as the Machinery Directive and current health and safety legislation must also be adhered to.

All connections (including factory made) must be checked for the correct tightness prior to commissioning of the electrical installation.
All connections should also be inspected periodically to ensure correct tightness.

DO NOT USE POWER TOOLS ON THESE PRODUCTS



LBFD1252P2258

Door Interlocked 2 Pole Switch Fuse

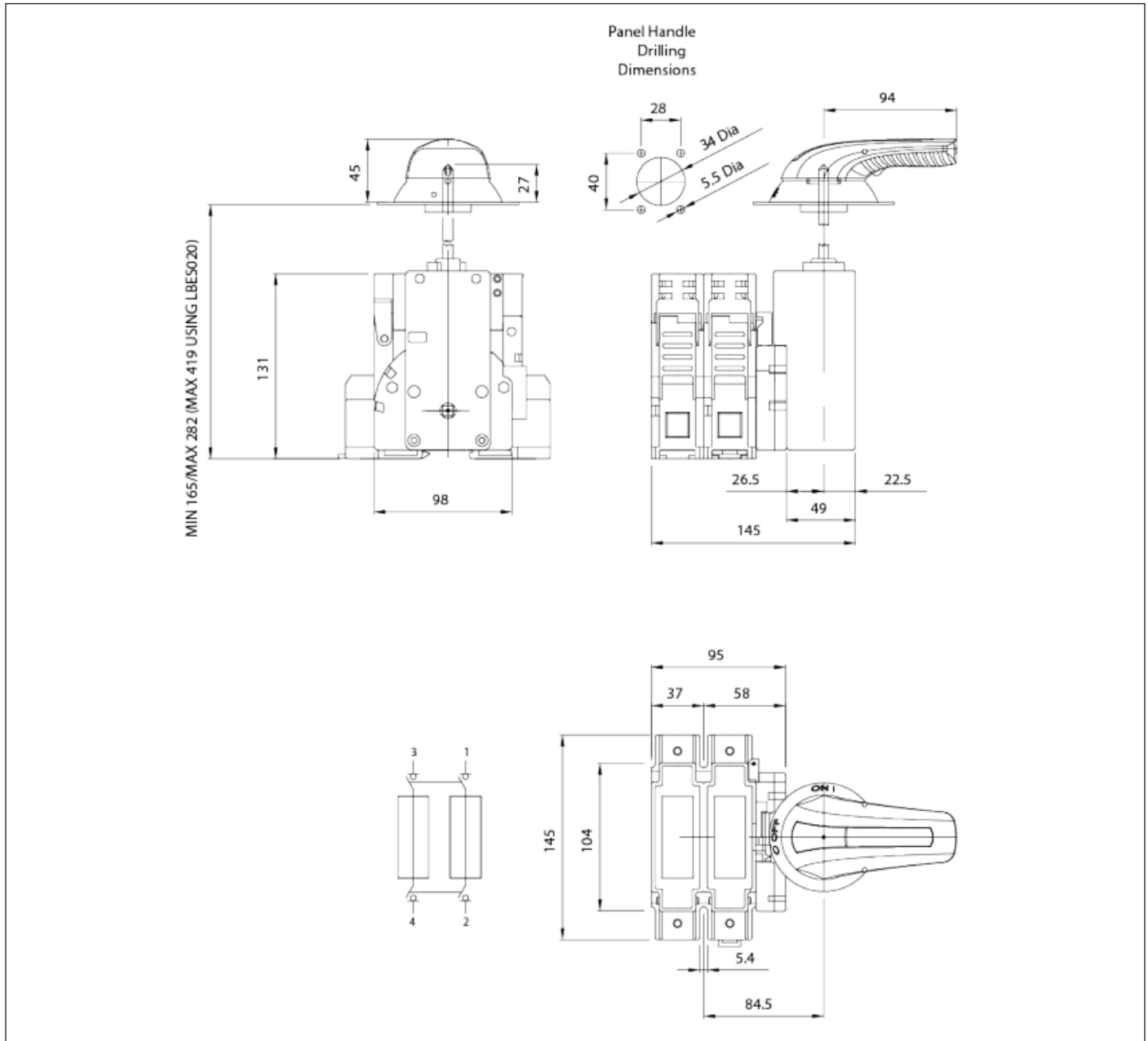
- EN 60947-3 Compliant
- IP65 Handle

Data	Range	Units	LBFD1252P2258
Fuse Size	-	-	22x58mm
Rated Thermal Current Ith at 40°C	Amps	A	125
Rated insulation voltage Ui	Volts	V	800
Rated dielectric strength	Volts	kV	6
Rated impulse voltage Uimp	Volts	kV	8
Rated operational current Ie at 400V AC-23	Amps	A	125
Rated breaking capacity	Amps	A	1000
Rated making capacity	Amps	A	1250
Minimum number of mechanical operations	-	Cycles	10,000
Minimum number of electrical operations @ 400V AC-23	-	Cycles	1,500
Terminal Capacity (rigid copper cable)	-	mm ²	95
Tightening torque	-	Nm	4
Power Dissipation of Fuse Links	Watts	W	12.5

LBFD1252P2258

Door Interlocked 2 Pole Switch Fuse

Dimensions



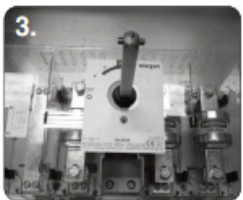
LBFD1252P2258

Door Interlocked 2 Pole Switch Fuse



Handle Assembly:

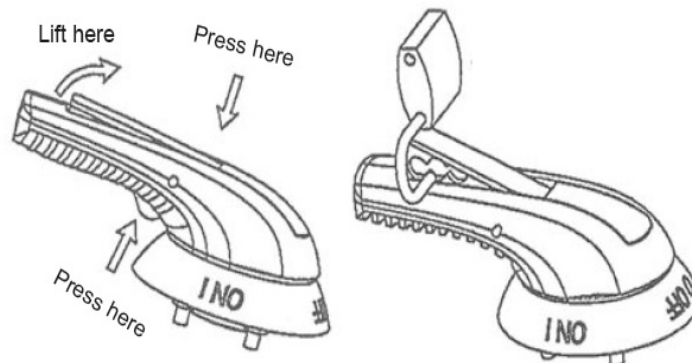
1. Ensure that the handle is in the off position and locate the handle on to the door with the handle showing the off position at 9 o' clock
2. Tighten the four M5, flange nuts to 1.5Nm



Shaft Assembly:

3. Ensure that the switch is in the off position and fully insert the shaft into the switch with the cross pin in a horizontal position
4. Tighten the M5 shaft grub screw to 1.2Nm using a 2.5mm A/F allen key

Padlock Operation



Door Interlock Defeat

Mechanism (For Authorised Personnel Only);

WARNING! ACCESS TO LIVE PARTS

- Ensure that the door is closed and the handle is in the on position
- Locate the hole on the right side of the handle, then push and hold a small pin into the hole to activate the defeat mechanism
- The door can now be opened in the on position. Remove pin and close the door to reset the mechanism

