

This document must be retained for future reference.

It is the responsibility of the person installing the electrical equipment to ensure that the installation meets the requirements of the IET wiring regulations and is therefore 'fit for purpose'. Factors such as correct selection of components, cable sizing, protective devices and Earth bonding are all critical and should be checked prior to full testing and power-up. Any other regulations applicable to the equipment being installed such as the Machinery Directive and current health and safety legislation must also be adhered to.

All connections (including factory made) must be checked for the correct tightness prior to commissioning of the electrical installation.
All connections should also be inspected periodically to ensure correct tightness.

DO NOT USE POWER TOOLS ON THESE PRODUCTS



Change Over Switches

63A and 125A 4 Pole Change Over Switch

✓ IP65 Rated ✓ IEC / EN 60947-3 ✓ Polycarbonate Enclosure



Padlockable in the OFF position.
Door interlock defeat mechanism.

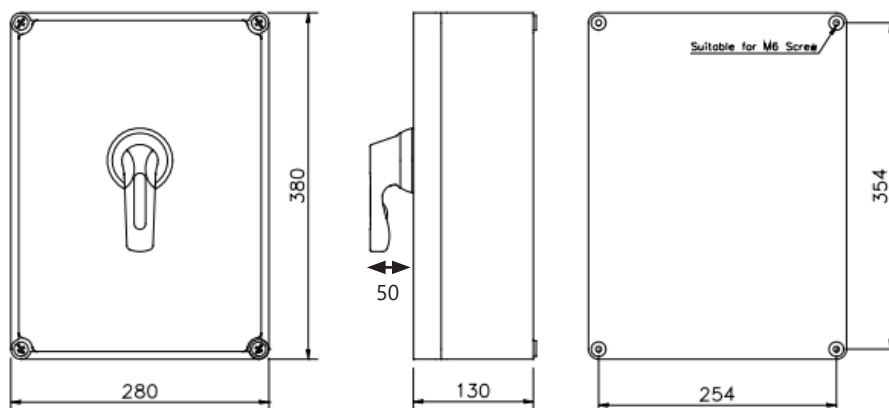
Data		Range	Units	LBC634PBB	LBC1254PBB
Rated Operational Voltage Ue					
IEC & EN		Volts	V	690	690
Main Switch: Isolating Voltage up to		Volts	V	750	750
Rated Impulse Withstand Voltage Uimp		Volts	kV	6	6
Rated Uninterrupted Current Iu		Amps	A	63	125
Rated Operational Current Ie					
IEC & EN	AC-22A	Up to 690V	A	63	125
	AC-21A	Up to 690V	A	80	125
	AC-1	Up to 690V	A	80	125
Rated Operational Power AC-23A (50-60Hz)					
IEC & EN	3 Phase	220-240V	kW	30	55
		280-440V	kW	37	75
		500-690V	kW	45	90
Rated Operational Power AC-3A (50-60Hz)					
IEC & EN	3 Phase	220-240V	kW	22	45
		440V	kW	22	55
		690V	kW	30	55
Short Circuit Capacity (IEC)					
Max Fuse Size (Type gL)		Amps	A	63	125
Rated Fused Short Circuit Current		Amps	kA	30	30
Terminal Specification					
Single/ Multiple Strand Wire			Min-mm²	2.5	2.5
			Max-mm²	25	50
Fine Strand with Sleeve			Min-mm²	2.5	4
			Max-mm²	10	50
Recommended Tightening Torque			Nm	2.0	2.5

Change Over Switches 63A and 125A 4 Pole Change Over Switch

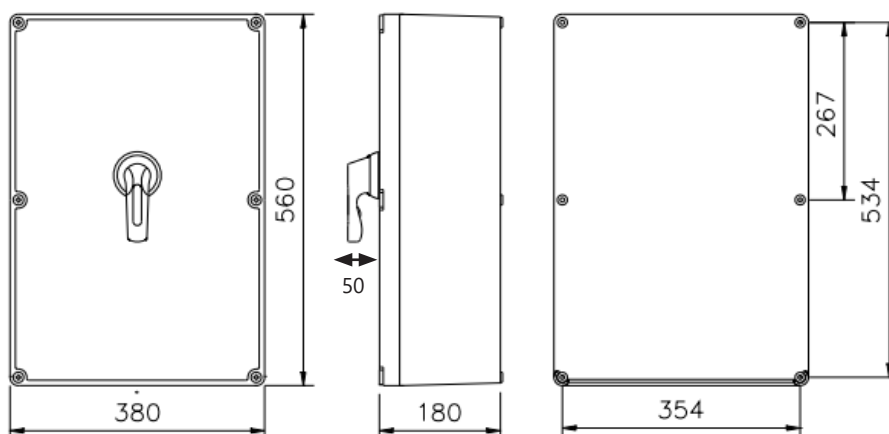
LBC634PBB

Note:
Change Over Switch is
break before make. 3
position, centre Off.

Max. Applied torque for
cap screw 1.5Nm



LBC1254PBB



Door Interlock Defeat Mechanism (For Authorised Personnel Only)

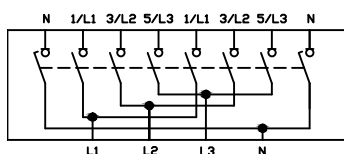
WARNING! ACCESS TO LIVE PARTS!

Ensure that the lid screws are loose and the handle is in the on position.
Locate the hole on the bottom of the handle, then push and hold a small pin into the hole to activate the defeat mechanism.
The lid can now be removed in the on position.
Keep the pin inserted to reinstall the door.

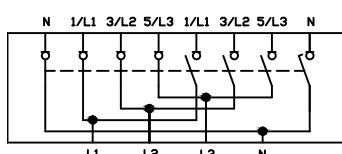


Terminal Configuration

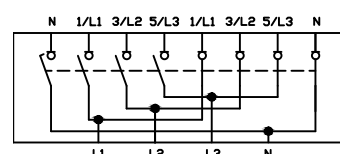
4 Pole Changeover Switch
(Position '0' shown)



4 Pole Changeover Switch
(Position '1' shown)



4 Pole Changeover Switch
(Position '2' shown)



	N	1/L1	3/L2	5/L3	1/L1	3/L2	5/L3	N
I	X	X	X	X				
O								
II					X	X	X	X

Change Over 4 Pole Switch Program

Note: Neutral contact is
early make / late break