

This document must be retained for future reference.

It is the responsibility of the person installing the electrical equipment to ensure that the installation meets the requirements of the IET wiring regulations and is therefore 'fit for purpose'. Factors such as correct selection of components, cable sizing, protective devices and Earth bonding are all critical and should be checked prior to full testing and power-up. Any other regulations applicable to the equipment being installed such as the Machinery Directive and current health and safety legislation must also be adhered to.

All connections (including factory made) must be checked for the correct tightness prior to commissioning of the electrical installation. All connections should also be inspected periodically to ensure correct tightness.

DO NOT USE POWER TOOLS ON THESE PRODUCTS



## IPS133P IP54 13A Panel Socket Outlet

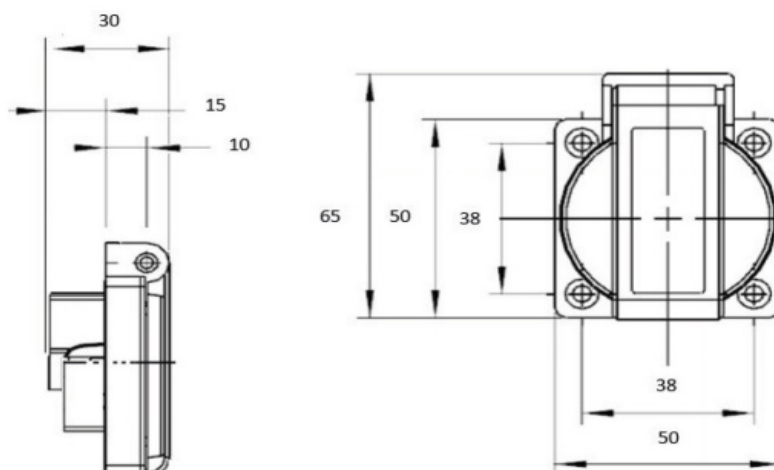
### Features & Benefits

- BS 1363 Compliant
- Ideal for caravans, campsites, generators and distribution equipment.
- Spring-return lid for added protection
- 1 Gang 13A UK Socket



### Specifications

Rated Current	13A
Rated Voltage	220-250V ~
No. of poles	2P + E
Operating Temperature	-25 °C ~ +40 °C
Relative humidity	5 to 95%, no condensation
IP Rating	IP54 (Without plug inserted)
Main Material	PA6
Colour	Blue
Max. torque for L-N/PE	2Nm
Terminal Capacity	4mm <sup>2</sup>



Note: Panel fixing screws not supplied