

This document must be retained for future reference.

It is the responsibility of the person installing the electrical equipment to ensure that the installation meets the requirements of the IET wiring regulations and is therefore 'fit for purpose'. Factors such as correct selection of components, cable sizing, protective devices and Earth bonding are all critical and should be checked prior to full testing and power-up. Any other regulations applicable to the equipment being installed such as the Machinery Directive and current health and safety legislation must also be adhered to.

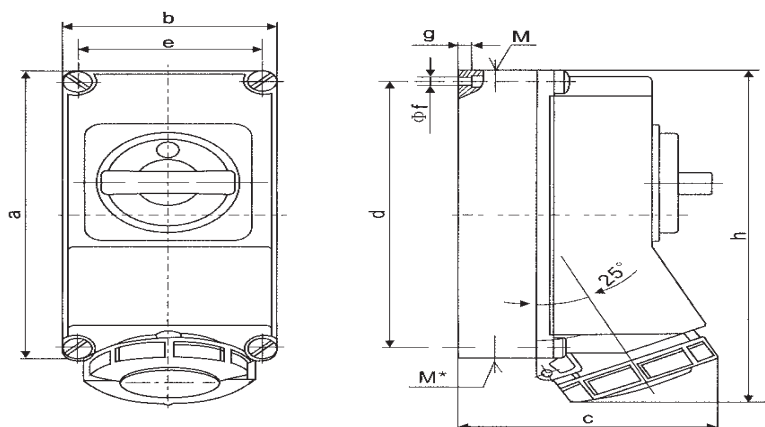
All connections (including factory made) must be checked for the correct tightness prior to commissioning of the electrical installation.
All connections should also be inspected periodically to ensure correct tightness.

DO NOT USE POWER TOOLS ON THESE PRODUCTS



IP67 Weather Proof Switched Interlock Sockets 16-63A

- Captive screws included
- Padlockable in the OFF position
- Compliant with BS EN IEC 60309-4



Part Number	Colour & Voltage	Amps	Poles	a (mm)	b (mm)	c (mm)	d (mm)	e (mm)	f (mm)	g (mm)	h (mm)	M TOP	M BOTTOM
SISW163F	Yellow 110V	16	3	225	118	144	208	101	6.3	8	252	1 x M25 1 x M32	2 x M25
SISW163P	Blue 230V		4			146					255		
SISW164N	Red 415V										259		
SISW165N			5			152					268		
SISW323F	Yellow 110V	32	3	274									
SISW323P	Blue 230V		4										
SISW324N	Red 415V				5								
SISW325N			5		63	3	262	162	196		240	140	8
SISW633P	Blue 230V	4											
SISW634N	Red 415V	5											
SISW635N													