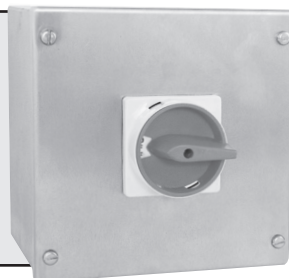


⚠ Important Safety Notice ⚠

It is the responsibility of the person installing the electrical equipment to ensure that the installation meets the requirements of the IET wiring regulations and is therefore 'fit for purpose'. Factors such as correct selection of components, cable sizing, protective devices and Earth bonding are all critical and should be checked prior to full testing and power-up. Any other regulations applicable to the equipment being installed such as the Machinery Directive and current health and safety legislation must also be adhered to. Terminals, including factory fitted, should be checked periodically to ensure correct tightness.



✓ Approved ✓ IP65 Rated ✓ IEC / EN 60947-3 ✓ Grade 304 Brushed Stainless Steel ✓ Fully Earth Bonded

DATA		Range	Units	LB634PSS	LB804PSS	DATA	Range	Units	LB634PSS	LB804PSS	
Rated operational voltage Ue						UL Power Rating					
IEC & EN		Volts	V	690	690	DOL	3 Phase	120V	hp	7.5	7.5
UL		Volts	V	600	600			240V	hp	15	20
Main switch: Isolating voltage up to		Volts	V	750	750			480V	hp	25	30
Rated impulse withstand voltage Uimp		Volts	kV	6	6			600V	hp	30	40
Rated uninterrupted current Iu		Amps	A	63	80		1 Phase	120V	hp	3	3
								240V	hp	7.5	7.5
Rated operational current Ie											
IEC & EN	AC-22A	Up to 690V	A	63	80	UL Short Circuit Ratings					
	AC-21A	Up to 690V	A	80	80	Fuse rating, class J		Amps	A	70	125
	AC-1	Up to 690V	A	80	80	Fuse rating, class RK5		Amps	A	-	-
Rated operational power AC-23A (50-60Hz)						Rated Fused short circuit current		Amps	kA	10	10
IEC & EN	3 Phase	230(240)V	kW	30	37	Short Circuit Capacity (IEC)					
		400(415)V	kW	37	45	Max fuse size (Type gl)		Amps	A	63	125
		690V	kW	45	90	Rated Fused short circuit current		Amps	kA	30	30
Rated operational power AC-3 (50-60Hz)						Terminal Specification					
IEC & EN	3 Phase	230(240)V	kW	22	30	Single/ Multiple strand wire			Min-mm²	2.5	2.5
		400(415)V	kW	22	37				Max-mm²	25	50
		690V	kW	30	55	Fine strand with sleeve			Min-mm²	2.5	4
									Max-mm²	10	50
						American wire gauge			AWG	6	1
									Recommended Tightening Torque		

Switch Dimensions



4P Switch Configuration

