

This document must be retained for future reference.

It is the responsibility of the person installing the electrical equipment to ensure that the installation meets the requirements of the IET wiring regulations and is therefore 'fit for purpose'. Factors such as correct selection of components, cable sizing, protective devices and Earth bonding are all critical and should be checked prior to full testing and power-up. Any other regulations applicable to the equipment being installed such as the Machinery Directive and current health and safety legislation must also be adhered to.

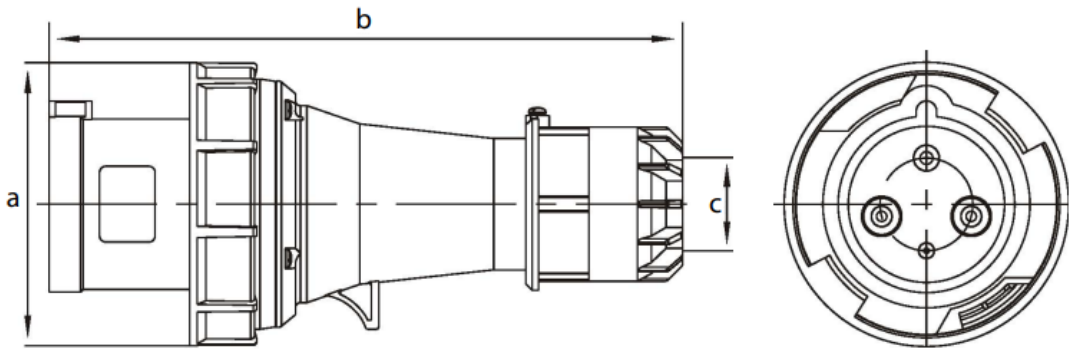
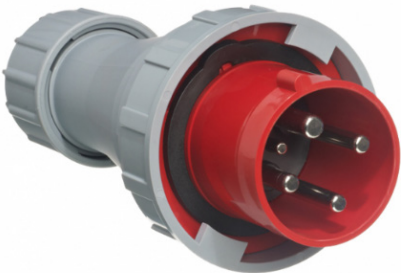
All connections (including factory made) must be checked for the correct tightness prior to commissioning of the electrical installation.  
All connections should also be inspected periodically to ensure correct tightness.

DO NOT USE POWER TOOLS ON THESE PRODUCTS



IPW1254N IP67 Weatherproof Industrial Plugs  
415V 125A 3P + E

- IP67 rated weatherproof in-line industrial plug
- Operating temperature between -25°C to +40°C
- Conforms to European/ International Standards EN/IEC 60309-2



| Part Number | Amps | Colour and Voltage | Poles  | Protection Degree | a (mm) | b (mm) | c (mm) | Terminal Capacity | Recommended Terminal Torque |
|-------------|------|--------------------|--------|-------------------|--------|--------|--------|-------------------|-----------------------------|
| IPW1254N    | 125A | Red<br>415V        | 3P + E | IP67              | 126    | 276    | 47     | 16 - 50           | 3.0 Nm                      |