

This document must be retained for future reference.

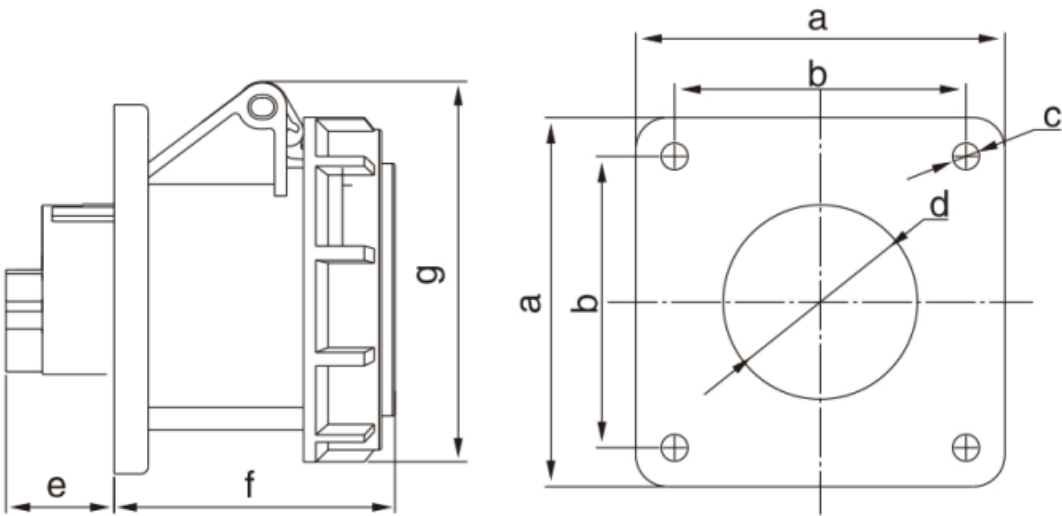
It is the responsibility of the person installing the electrical equipment to ensure that the installation meets the requirements of the IET wiring regulations and is therefore 'fit for purpose'. Factors such as correct selection of components, cable sizing, protective devices and Earth bonding are all critical and should be checked prior to full testing and power-up. Any other regulations applicable to the equipment being installed such as the Machinery Directive and current health and safety legislation must also be adhered to.

All connections (including factory made) must be checked for the correct tightness prior to commissioning of the electrical installation.
All connections should also be inspected periodically to ensure correct tightness.

DO NOT USE POWER TOOLS ON THESE PRODUCTS



IPSW164N|IPSW324N|IPSW163P|IPSW323P|IPSW163F|IPSW323F
IP67 Weather Proof Industrial Panel Sockets



Part Number	Amps	Colour and Voltage	Poles	Protection Degree	a (mm)	b (mm)	c (mm)	d (mm)	e (mm)	f (mm)	g (mm)	Cable Nominal Cross Section Area
IPSW164N	16A	Red 415V	3P + E	IP67	76	60	5.5	40	19.5	60	85	1 - 2.5
IPSW324N	32A							50	24	70	95	2.5 - 6
IPSW163P	16A	Blue 230V	2P + E					40	19.5	59	77	1 - 2.5
IPSW323P	32A							50	24	70	98	2.5 - 6
IPSW163F	16A	Yellow 110V						40	19.5	59	77	1 - 2.5
IPSW323F	32A							50	24	70	98	2.5 - 6