

⚠ Important Safety Notice

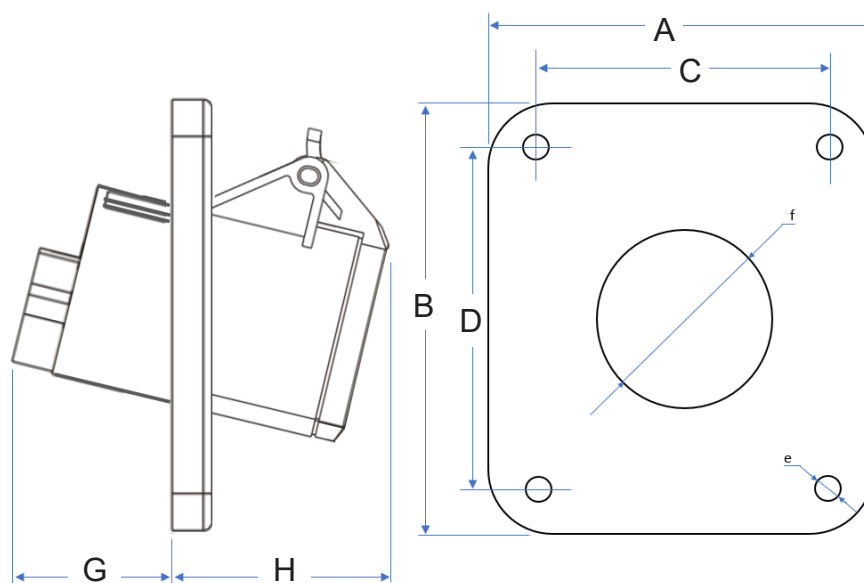
It is the responsibility of the person installing the electrical equipment to ensure that the installation meets the requirements of the IET wiring regulations and is therefore 'fit for purpose'. Factors such as correct selection of components, cable sizing, protective devices and Earth bonding are all critical and should be checked prior to full testing and power-up. Any other regulations applicable to the equipment being installed such as the Machinery Directive and current health and safety legislation must also be adhered to.

All connections (including factory made) must be checked for the correct tightness prior to commissioning of the electrical installation. All connections should be checked periodically to ensure correct tightness.

DO NOT USE POWER TOOLS ON THESE PRODUCTS



Dimensions



Part Number	Amps	Colour & Voltage	Poles	Protection Degree	Earth Pin Position	Cable Nominal Cross Section Area	Dimensions (mm)							
							A	B	C	D	E	F	G	H
IPSA163F	16A	Yellow	2P + E	IP44	4h	1 - 2.5mm ²	93	101	77	86	5.5	50	35	55
		110V ac												
IPSA323F	32A	Yellow	2P + E	IP44	4h	2.5 - 6mm ²	93	101	77	86	5.5	65	40	60
		110V ac												
IPSA163P	16A	Blue	2P + E	IP44	6h	1 - 2.5mm ²	93	101	77	86	5.5	50	35	55
		230V ac												
IPSA323P	32A	Blue	2P + E	IP44	6h	2.5 - 6mm ²	93	101	77	86	5.5	65	40	60
		230V ac												
IPSA164N	16A	Red	3P + E	IP44	6h	1 - 2.5mm ²	93	101	77	86	5.5	56	35	50
		415V ac												
IPSA324N	32A	Red	3P + E	IP44	6h	2.5 - 6mm ²	93	101	77	86	5.5	65	40	60
		415V ac												
IPSA165N	16A	Red	3P + N + E	IP44	6h	1 - 2.5mm ²	93	101	77	86	5.5	63	35	45
		415V ac												
IPSA325N	32A	Red	3P + N + E	IP44	6h	2.5 - 6mm ²	93	101	77	86	5.5	70	45	60
		415V ac												