

It is the responsibility of the person installing the electrical equipment to ensure that the installation meets the requirements of the IET wiring regulations and is therefore 'fit for purpose'. Factors such as correct selection of components, cable sizing, protective devices and Earth bonding are all critical and should be checked prior to full testing and power-up. Any other regulations applicable to the equipment being installed such as the Machinery Directive and current health and safety legislation must also be adhered to.

All connections (including factory made) must be checked for the correct tightness prior to commissioning of the electrical installation.
All connections should be inspected periodically to ensure correct tightness.

DO NOT USE POWER TOOLS ON THESE PRODUCTS

Europa Helpline: 01582 692 444 / Email: technical@europacomponents.com

Europa House, Airport Way, Luton, Beds, LU2 9NH Tel: 01582 692 440

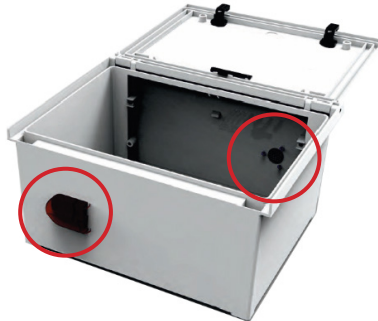
e-mail: sales@europacomponents.com website: www.europacomponents.com

Part Number: **ATLAS-BO-DV-M | ATLAS-BO-DV-G**

ATLAS GRP Enclosure Air Vents

Features & Benefits

- Supplied in pairs for optimum air circulation.
- Available in 2 sizes: Small and Large.
- Easy to install.

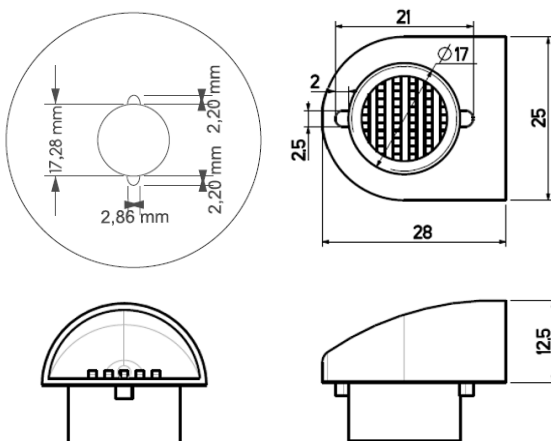


Notes:

- Modification of the enclosure is required in order to perform the installation.
- Recommended installation position: Diagonal (see image on left)
- This will reduce the protection of the enclosure to IP54.
- Regular inspection is recommended to ensure vent is clear allowing correct air circulation.

**ATLAS-BO-DV-M**

IP54 Small Ventilation System

**ATLAS-BO-DV-G**

IP54 Large Ventilation System

